

Claw Styptic Putty for Pets TM

CLAWTTYTM

Description

- ClawttyTM is an innovative styptic putty designed to stop bleeding in pets.
- A synthetic material, made from biodegradable polymers.
- The ready-to-use sticks are soft and easy and quick to apply. Using dry and clean fingers, ClawttyTM is easily molded to the desired shape and consistency that provides immediate styptic effect when attached to bleeding claw or beak.
- It works quickly and easily by simply kneading and attaching.
- Immediately stops claw or beak bleeding by acting as a mechanical barrier that does not act biochemically.
- It does not contain animal products or beeswax.
- ClawttyTM's styptic and water-soluble property allows it to be wiped cleanly with a wet tissue after use.

Ingredients ... Poloxamer, Gelatin, CAP, Poly Glycol, Benzocaine.

Inactive Ingredients ... Biodegradable starch paper.

Directions

- Wash your hands before taking out the product.
- Grasp both wings of the EZ peel pouch and carefully pull them apart to open it.
- Take out the ClawttyTM wrapped in starch paper from the EZ peel pouch and unwrap the starch paper.
- Knead ClawttyTM with clean fingers 6-9 times until it becomes a soft putty.
- Do not knead too hard or for too long.
- Attach the round-shaped putty to the bleeding area.
- After about 2-3 minutes, wipe it off with a wet tissue to check if the bleeding has stopped.
- Do not use on deep wounds, body cavities, or burns.
- If bleeding does not stop, consult a veterinarian.

Uses

- Nail clipping. • Clipping wings.
- Beak trimming/injury. • Treating minor cuts.

Warnings

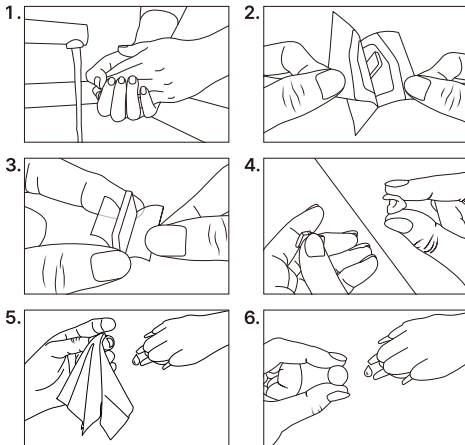
- For external use on animals only.
- Do not re-use.
- Keep out of reach of children.
- Refrain from eating or swallowing; if ingested, consult with your veterinarian.
- If contacted with eyes, rinse thoroughly with water and consult with your veterinarian if any abnormal symptoms persist.
- While storing, the product's surface could slightly melt and stick onto the packaging due to high temperature, but the product is still entirely suitable for use as long as the packaging has not been opened.

**INNOVATIVE STYPTIC PUTTY
KNEAD AND ATTACH !!!**

Quick & Easy application at your fingertips

- Simply knead ClawttyTM 6-9 times until it becomes a soft putty.
- After attaching the putty-shaped ClawttyTM to the bleeding area, it is unnecessary to hold or press it down to the injured area.
- ClawttyTM is water-soluble so that you can wipe it off easily and cleanly using a wet tissue.
- We ensure you a painless and convenient experience both for you and your pet.

How to Use



ver0724m2

Specification

Product	Weight	Order Code	EA/BOX
Clawtty TM S	0.4~0.45g/ea	CLT12103	12
Clawtty TM M	0.5~0.55g/ea	CLT16103	12
Clawtty TM L	0.6~0.65g/ea	CLT20103	12

Size Recommendation

- ClawttyTM S : pet weight 1~10 lbs
e.g, Maltese, Yorkie, Chihuahua, Poodle, Rat Terrier, Shih-Tzu.
- ClawttyTM M : pet weight 10~20 lbs
e.g, Boston Terrier, Cocker Spaniel, Westie, Corgi, Schnauzer.
- ClawttyTM L : pet weight 20~70 lbs
e.g, Scottie, Labrador, Shepherd.

* Caution : This recommendation is for reference only, and even for cats, we recommend that you choose according to the weight of the cat.

Storage and Shelf life

- Store in a dry place and avoid direct sunlight. (0°C~28°C)
- Shelf life is two years from manufacturing date.

**STOP BLEEDING QUICK & EASY & CLEAN
FOR DOGS, CATS & BIRDS**



Manufactured by: MBIOLOGICS
18017 Sky Park Circle, Suite D Irvine, CA 92614. USA.
www.mbiologics.us / www.clawtty.com

mbiologics
Biologic Solutions